



THE VIRGINIA PEN



GEM AND MINERAL SOCIETY OF THE VIRGINIA PENINSULA

November 2016



PRESIDENT'S CORNER

Sara Phillips

Special Points of Interest:

- Seay Gold Mine,
 - Buckingham County, VA
 - Sunday December 11th at 9:00AM
- GMSVP Holiday Party
 - December 1st, 7 PM
 - Sandy Bottom Nature Park's Nature Center Hampton, VA

In This Issue

President's Corner	1 & 2
GMSVP Purpose	1
Club's Holiday Party	2
Kyanite Field Trip	2
Chapter Contact Info	2
Pebble Pups Update	3
Welcome New Rockhounds!	3
Need Volunteers for Committee Chairs	3
Biggs Jasper	4
EFMLS Contest	4
Winners	4
GMSVP Dues Are Due!	4
Last 2016 TOTE Show	5
Need New Show Coordinator	5
Cleaning Minerals	5
Cleaning Minerals	6
Inexpensive Trim Saw	7
Jewelry Bench Tips	8
Back from Idaho	8
2017 Wildacres Workshop	8
Junior Activities	9
Exploration of Mars	10
William Holland Catalog	10
Fossil Field Trip	11
Club Gear	11
Seay Gold Mine Field Trip	12
2017 TOTE Show Dates	12
Dec Club Meeting Info	12
GMSVP Minutes	13-14
Upcoming Shows	14
AFMS Code of Ethics	15



Gobble gobble GMSVP members - it's that time again – it's time for Turkey! I hope everyone is getting geared up for the holidays and has a swell time!

It's that time again for membership renewals so please renew your membership at the December 1st membership meeting! Our December 1st meeting will consist of a few board and committee announcements, board nominations and elections, and of course our Holiday Party! Please bring a side dish or dessert of your

choice to share with the group. We will also have a very quick presentation on the upcoming mineral collecting field trip on December 11th.

Last month, I attended the EFMLS annual convention in Rochester, NY. I had a wonderful time, and made lots of new contacts. I was able to receive awards for our club and presented them at our November meeting. Congratulations to all who received an award!

Now that I am also the Region IV Vice President, I will be reaching out beyond our club in an effort to bring everyone together to spread the knowledge and fellowship of all things geology. We have clubs in our region (located in Maryland, DC, Delaware, and Virginia) that we can collaborate with to try and put together annual group events. Stay tuned for future information.

We have several committee positions open. Please take a look at page 3 of the newsletter for open positions and let me know if you are (Cont'd on next page)

GMSVP Purpose: The purpose of the GMSVP is to: facilitate the exchange of information and general cooperation among its members by promoting the study of lapidary techniques, mineralogy, paleontology, and allied fields of Earth sciences; provide the community with a knowledge of the hobby through lectures, demonstrations, and exhibitions; and enjoy good fellowship.

Visitors Welcome: The GMSVP welcomes any visitor with an interest in geology, mineralogy and the lapidary arts. Whether you are a hobbyist, artist, collector or interested in Earth Science, the club has something for everyone.

Dues: Individual \$15, Couple \$20, and Family \$25. Dues information is under: [Documents and Membership Information on the GMSVP Website Homepage.](#)

Meeting Location: Our meetings are held at [Sandy Bottom Nature Park](#) in Hampton, VA. Check the GMSVP website [Events](#) page for actual dates and times. The upcoming meeting information is in the Special Points of Interest area on the left of this page.



GMSVP

P. O. Box 6424
Newport News, VA 23602

Web: <http://www.gmsvp.org>

Facebook: www.facebook.com/pages/The-Gem-and-Mineral-Society-of-the-Virginia-Peninsula-GMSVP/275041405841489

Officers

President: Sara Phillips,
SPhillips@ecslimited.com

1st VP Membership: Brenda
Hawks, brenda_hawks@verizon.net

2nd VP Programs: Michael
Griffith, MGriff8645@aol.com

Secretary: Pat Fontaine,
maineguy@cox.net

Treasurer: Gary Bergtholdt,
gbergtholdt@gmail.com

Committee Chairs

Field Trips: **Vacant**

Hospitality: Pat Fontaine,
maineguy@cox.net

Pebble Pups: Co-Chair #1
Vacant; Co-Chair #2 Christine
Hempley, offalstuff@gmail.com

Shows: **Vacant**

Newsletter: Dan Fontaine,
maineguy@cox.net

Property: **Vacant**

Librarian/Historian: **Vacant**

Faceting: Chuck Rogers,
car3rd@verizon.net

Silversmithing: Anthony
Hubbard, lanexa05@gmail.com

Publicity: Michael Griffith,
mgriff8645@aol.com

Mineralogy: Walter Priest,
wetlanddesign@gmail.com

Webmaster: Holly Worsham,
gmsvp.web@gmail.com

President's Corner (Cont'd)

Sara Phillips

(Cont'd from prior page) interested in volunteering. We already have a great group of volunteers, and we are always looking to expand it.

Fun Mineral Fact: Topaz and Citrine are the traditional gemstones for the month of November (they are unrelated to each other). Citrine is typically an orange-yellow color, while Topaz can be a wide variety of shades and colors far beyond yellow. They are both affordable and fairly abundant. Have a Gneiss Day!!!

Sara Beth

December "Holiday Party"

Michael Griffith



Holiday Party!

The December 1st meeting (Holiday Party) is at 7 PM at the Sandy Bottom Nature Park's Nature Center (enter from the Big Bethel Road). The meeting focuses on fun and fellowship. Chairs and tables with tablecloths will be set up to add to a festive atmosphere. The club will supply the turkey and ham, and our members are requested to bring some delectable side dishes and desserts.

The 2017 GMSVP officers will be installed, and closing actions for 2016 and preliminary plans for 2017 will be discussed. There will be an optional Pollyanna Gift Exchange (~\$10). Gifts should be related to our hobby.

Come to the GMSVP December meeting! It is a great way to celebrate the holidays with our many rockhound friends.



GMSVP's "The Virginia Pen": Non-commercial reprint permission is granted to non-profit organizations, unless otherwise noted.

FAIR USE NOTICE. This publication may contain copyrighted material the use of which has not been specifically authorized by the copyright owner. We are making such material available in our efforts to advance the educational understanding of the amateur jewelry fabrication and rock collecting hobbies. We believe this constitutes a 'fair use' of any such copyrighted material as provided for in section 107 of the U.S. Copyright Law. If you wish to use material from this publication for commercial or purposes of your own that go beyond 'fair use', you must obtain permission from the copyright owner.



In June, we were grateful for Anthony Hubbard's efforts to share his silversmithing craft with the Pebble Pups. He shared how silver was worked and welded. He showed the kids different design twists for the silver wire material. The kids enjoyed taking turns twisting the silver wire and analyzing the differences in the twist designs with how much twisting occurs. Also the kids got to make impressions on silver plates. He showed how these impressions could be used as borders or as backgrounds to the lapidary projects. As part of shared his creations, Anthony gave examples of rocks good for lapidary projects. Maybe we will be able to continue "Lapidary Arts," Section 4 of the American Federation of Mineralogical Societies (AFMS) badge.



In October, we discussed fossilization methods. These included casting, recrystallization, petrification, carbonization, and original remains. The original remains concept was easy to understand when the pebble pups related ice encapsulations and plant sap encapsulations. The casting was also easily related to broken bone casting. The other three, took a little more explaining and may need reinforcing.



For December, I hope we can distribute a couple of awards, play a game and plan for next year's activities.



New GMSVP Members—Welcome New Rockhounds!

**James Cheche
Al Coles**

Martha & William Long

Help Needed—Please Volunteer!

- At the December 1st meeting, the candidates for the 2017 GMSVP board will be shared, discussed as necessary, voted on, and installed.
- Please consider volunteering for the following vacant committee chair positions:
 - ◇ Field Trip Coordinator
 - ◇ Pebble Pups Co-chair
 - ◇ TOTE Show Coordinator
 - ◇ Property Manager
 - ◇ Silver Jewelry Instructor
 - ◇ Club Librarian/Historian

Biggs Jasper

Source: Condensed from The Rock Licker, via THE ROCK RATTLER 1/94, Via Glacial Drifter 2 & 3/01, & via Tidewater Gem and Mineral Society's The Tidewater Prospector



Biggs jasper is one of the more recently discovered picture rock materials. The first piece was found about 1960 in a creek bottom south of Biggs Junction, Oregon. It is one of the more distinctive jaspers even though it lacks brilliant colors. Its design is unique among siliceous rocks. It takes an excellent polish.

Biggs jasper seems to have developed from the muds of short-lived streams that evolved on the surface of a cooled basalt terrain. The raw materials (plastic colloids, silica, clay, and iron) came from the weathering of recent igneous rocks and were deposited in the settling basins of stream channels. Heat and pressure from volcanic activity then served to form jasper, small creeping motions led to the marbled rosettes and picture designs.

Biggs jasper is sandwiched between two basalt lava flows that cover Oregon, Washington, and parts of Idaho. Plants and animals inhabited the newly formed water courses as shown by the fossil fish found in the area.



GMSVP Awards at EFMLS Conference

Sara Phillips

I recently represented our club at the annual EFMLS Conference in Rochester, NY. While there, I attended the Editors Breakfast, where club website and bulletin contest awards were announced and distributed. Members from our club were recognized by the following awards.

Issue	Author	Item	Category	Award
NA	Holly Worsham	GMSVP Website	Website	1st Place
Jan-15	Sara Phillips	Devil's Backbone	Technical Article	5th Place
Feb-15	Seth Hempley	Mines	Junior Article	Honorable Mention
Mar-15	Barbara & Walter Priest	Pilgrimage to Tucson	Non-Technical Article	4th Place
Sep-15	Robert Mazzrillo	You Know That You Are a Rockhound, If	Written Feature	Honorable Mention
Oct-15	Gary Bergtholdt	A Summer of Fun and Learning	Non-Technical Article	Honorable Mention
Nov-15	Michael Griffith	On the Hunt for Fossil Shark's Teeth	Non-Technical Article	3rd Place
Nov-15	Dan Fontaine	November 2015 GMSVP "The Virginia Pen"	Large Bulletin	4th Place

Two our EFMLS winners also were recognized by AFMS at the national level. Holly Worsham received 1st place for the GMSVP Website, and Michael Griffith got 5th place for his "On the Hunt for Fossil Shark's Teeth" article.

Time to Renew Your GMSVP Dues

Brenda Hawks

It is that time again.

GMSVP dues are "due" by the December 1st meeting. Dues are \$15 for a Member, \$20 for a Couple, and \$25 for a Family under the same roof. Membership dues will run from January to December 2017.

You can either pay the dues at the November or December meetings or by mailing the form with payment to: GMSVP, P. O. Box 6424, Newport News, VA 23602. You can download the membership form from our website at: <http://www.gmsvp.org/member-sign-up--documents.html>.



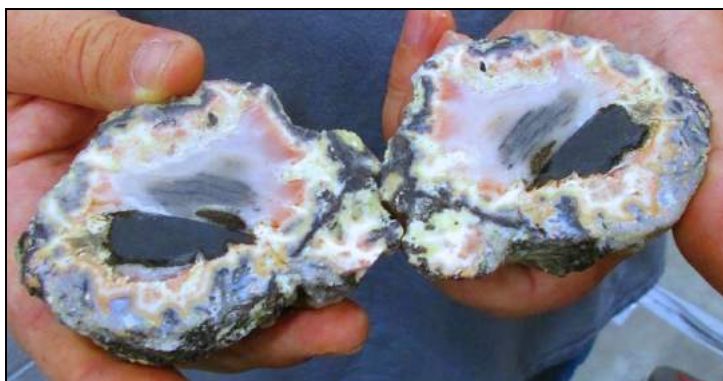
This year's TOTE shows have ended and overall we have had a great year. The October show was a record breaker. Our

GEODE sales were the best we have seen in many years; this was primarily due to the Moroccan geodes that Gary Bergholdt found. THANKS FOR THE GREAT SUPPORT OF OUR MEMBERS THAT PARTICIPATED IN THIS SHOW!

There will be four TOTE Shows in 2017:

- Hampton Roads Convention Center, Hampton, VA: March 24—26,
- Virginia Beach Convention Center: April 21—23, July 14—16, & October 6—8

I encourage all our members to come out and volunteer at our club's booth at these shows. This is a great opportunity to meet rockhounds and vendors from all over the country.



NOTE: *We need someone to step up and take over the position as TOTE Show Chairperson. Due to my age and the accompanying aches and pains associated with the aging process, I am stepping down as the show person. I will still participate in all the shows. Please consider volunteering.*



Cleaning Minerals

Michael Griffith



At the October meeting, Tom Leary of the Richmond Gem and Mineral Society familiarized our members on his preferred ways of cleaning minerals, i.e., using muriatic acid or media blaster. He emphasized to use the appropriate safety procedures. He circulated among our members some examples of minerals before and after cleaning, so that we could observe the striking differences.

See the next page for Tom's preferred ways of cleaning minerals!



Cleaning Specimens

Tom Leary, Richmond Gem and Mineral Society

Note: Contact the Richmond Gem and Mineral Society for permission to reprint in another club's bulletin.

Here is the best way that I use to clean my specimens.

First, if you are not experienced with acids and chemicals, do not try this method of cleaning. There are dangers in using acid and only people with experience with safe handling should attempt this cleaning method on minerals. Wear safety goggles, nitrile gloves, and even an apron if one is available as the acid can cause severe eye damage and irritate and damage the skin.

Buy a crock pot that has a "warm" or "low" setting. You don't want to boil the stuff. It will make awful vapors and shorten the cleaning time for the specimens.

Place the specimens in the crock pot, add about two inches of water, and then add 4 inches of hydrochloric acid. If a larger batch is needed, add two parts of hydrochloric acid to one part water.

Muriatic acid is the same as hydrochloric acid. Muriatic acid is the name commonly found at hardware stores. It is usually 37 percent strength hydrochloric acid.

Cover the crock pot with a plastic lid, I use an old polyethylene cutting board as a lid. I don't like to use the glass lids that come with the crock pot as the metal handle comes off from the acid dissolving the screw.

Plug it in...and leave it on the lowest setting. It should be about 160 to 180 degrees Fahrenheit. Leave it sit like this OUTSIDE the house or garage. I prefer a week of hot soak, If you need to add acid or more water, UNPLUG IT FIRST AND LET IT COOL OFF!! Hot fumes of acid are most unpleasant.

After the hot soak in acid is finished, carefully pour the acid into a bucket for future use. Use care to not lose specimens into the bucket or acid might splash back. I hold the cover to the crock pot while pouring to prevent this.

Now that the acid is removed, I soak my specimens in clean water. This can be done in cold water, or in a low heat setting again in the crock pot. I let the specimens sit in clear water a few days and change the water out with fresh water. Do this several times and the specimens will come out clean. If they turn a yellow color on drying, repeat the clean water soaks until it goes away. Porous specimens take more clean water soaks than solid specimens.

When the acid is no longer effective, add baking soda to it outside. It converts the acid to sodium chloride...salt.

Remember, SAFETY FIRST! and good luck with the cleaning.



Source: AFMS Newsletter, Vol 70, No. 1, November 2016

After completing a long overdue honey-do task of tiling our kitchen floor, I wondered if the inexpensive tile saw I bought at Harbor Freight (<http://www.harborfreight.com/4-12-in-portable-wet-cut-tile-saw-69230.html>) could be used as a trim saw. I already have a trim saw, but this tile saw has some features that are valuable to me that are missing from my trim saw. It is inexpensive, it can be purchased for less than \$50, if you use a coupon. It is virtually all plastic which makes it comparatively light and compact, an important feature for traveling in an RV. Finally, it has a large table to work on, about 18" square. Often times I find myself working with a slab that is too big for my trim saw.

So, how did this tile saw do as a trim saw? Not so good at first. The tile cutting blade is way too aggressive, I was unable to make any cuts without chipping the stone. The blade guard hinge is designed to be loose, so it completely covers the blade while cutting tile. One more thing, it's as loud as a shop vac! It was obvious that if I was ever going to use this saw as a trim saw, modifications were in order.



The first modification was to replace the tile saw blade with a lapidary blade. Finding a replacement blade was not as easy as I expected. This saw uses a 4-1/2" blade with a 5/8" arbor that is interchangeable with a litany of die grinders and cut off tools, all of which have very aggressive blade designs. Lapidary trim saws uses 4" blades with 1/2" arbors. Even if I chose to use a 4" lapidary blade the 1/2" arbor hole simply wouldn't fit the saw. Then I found it, a 4-1/2" lapidary blade that would fit my tile saw. It is available on EBay, ships from China, and cost \$14 (<https://www.ebay.com/itm/171289601747>). This saw blade actually has a 3/4" arbor hole, and the seller will supply you with a 5/8" bushing, if you request it during your EBay purchase at check out.



The second modification was to fix the blade guard, so it will hold whatever position I put it in rather than free falling to the table. That modification also allowed me to see the cut line while I was working. This was an easy mod. All I did was add some washers under the nut that holds it all together until there was enough friction to hold the blade guard from moving. The down side of this mod is that now it sprays water when you're cutting. There is a channel that encircles the table to catch and recycle the water, so I cut a piece of plastic and wedged it in the channel to act as a splatter guard and that completed this modification.



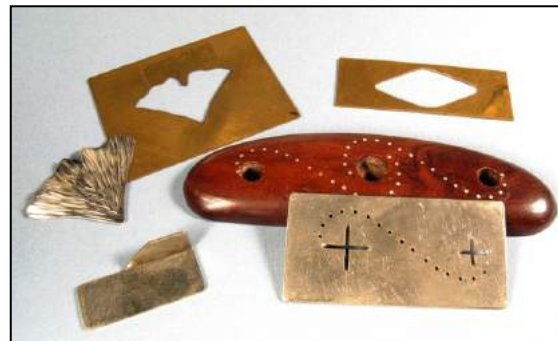
Finally, what to do about how loud this saw is. Not much, it still sounds like a shop vac. But if you're looking for a budget minded trim saw and you don't mind the noise, this may be for you. You can be up and running for less than \$75, and with these modifications it does a fine job as a trim saw. I'm sure my neighbors wonder why I spend so much time vacuuming in my back yard.

TEMPLATES

Whenever I have to make more than 2-3 exact copies of anything, I think of making a template. A template lets me easily draw the shape of an item. Art stores sell templates for common shapes like circles, ovals, hearts, etc. Other sources would include: www.cooltools.us/ and www.kingsleynorth.com/.

For nonstandard shapes, it's easy to make your own template. Simply cut the shape out of sheet plastic or thin sheet metal. My preference is brass. I carefully lay out the shape using a steel ruler, a set of dividers, a scribe, and a fine center punch.

One example is the brass template shown in the photo that lets me quickly trace the design of ginkgo leaf earrings onto silver sheet. Another is the nickel template which makes it easy to drill a pattern of holes for pin inlay into wooden handles.



DENTAL TOOLS

A ready source of free tools is your local dentist. Dental picks can be reworked into wax tools or straightened and sharpened to make a stylus for marking and layout. The steel in these tools is high quality, and the handles are designed for comfort.

A special note however - If you want to modify the shape of the tool, don't try to just bend it with pliers. Working this alloy of steel while it's cold will cause it to snap. Changing its shape can only be done when it's hot. I work it like a blacksmith. Prop your torch up on the bench so that you can use both hands for the work. Have a hammer and bench block ready. Heat the tip red hot, and hammer it straight or bend it with pliers.

And don't forget to ask your dentist for some of the cutting burs they throw out. These are useful for a variety of things. It's best to call a week or two before your visit and ask the dentist or hygienist to put some of these tools aside for you. It's good practice also to ask that they run them through the sterilizer for you. If that's not possible, pop them in an oven at around 250 °F.

See all Brad's jewelry books at: Amazon.com/author/BradfordSmith.

Back from Idaho Opal Mine

Ellie Pitts

We just got out of the mountains, and arrived back in Virginia by about Nov 1st. It was a good summer, with two safe, enjoyable digs. Ed's first time there!



Here is a photo of our drive out -- that is Wilbur (100 years old, and finder of the opal mine) in front of us on October 17th!

SPRING 2017 WILDACRES

Spring 2017 EFMLS Workshop at Wildacres
Monday, May 22 – Sunday May 27

Speaker-in-Residence
Bob Jones

Class schedule and more information next month

Plan Ahead Now!

Source: EFMLS Newsletter, Volume 64, No. 1, November 2016

Fourth Edition of our AFMS/FRA Badge Manual Is Now Posted!

I was appointed CFMS Juniors Activities Chair in 1998 and then AFMS Juniors Program Chair in 2003. I immediately set to work developing a nation-wide Badge Program modeled after the Boy Scouts and Girl Scouts. Month-by-month in the AFMS Newsletter, I outlined ideas for badges, and—with approval from AFMS officers and generous support of the AFMS Endowment Fund, which I cannot thank enough—we began offering our AFMS Future Rockhounds of America Badge Program entirely free to affiliated clubs and societies nationwide in 2004.

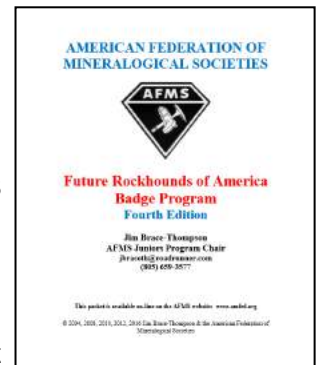
At the time I indicated if the program proved successful, my goal was to update and expand it every 4 years. With well over 11,000 badges now awarded to kids nationwide, I'm happy to report we have proven successful! 558 kids have been awarded the Rockhound badge by earning at least 6 of the activity badges, and 26 kids have earned coveted Rock Star status by having earned each and every badge in the program. Their names are recorded on our AFMS Kids Corner website in Honor Rolls recognizing their achievements. (My sincere thanks to Marty Hart for his always helpful, cheerful, unflinching and consistent assistance with the AFMS website these many years.)

The first edition of my Badge Manual offered 9 badges and 53 activities. Staying true to plan, I've updated and expanded it in 2008 and 2012 (with a minor update in 2010), and I'm now pleased to report I have sent the 2016 edition to Marty to post on the AFMS website. This 4th Edition offers 20 badges and 130 activities. As with past editions, many new activities were suggested by the junior leaders of local clubs. In fact, one of the badges introduced in our 3rd Edition was designed by a junior member, Rock Star Erica Nathan of Florida. Similarly, in our 4th Edition another junior member—Rock Star Jem Burch of California—suggested an “Elements” activity you'll now find as part of our Rocks & Minerals badge.

For the 4th Edition, I issued requests for new badge ideas via the AFMS and CFMS newsletters, and I thank the 22 people who responded with suggestions. There were no overwhelming calls to add whole new badges. Some suggested adding Elements, Prospecting, and Beading badges, but because of manufacturing expenses a whole new badge incurs, I've opted instead to include these ideas as new activities within the existing badges for Rocks & Minerals, Gold Panning & Prospecting, and Lapidary Arts. For those already familiar with the program, here are examples of changes you'll find:

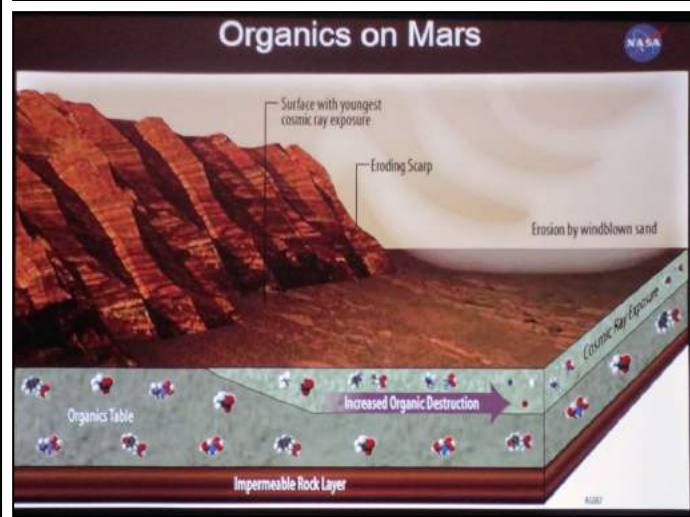
- The Manual has grown from 223 pages to 255, with 86 pages revised or entirely new.
- Over a dozen new activities have been added within our existing badges.
- Many previously existing activities have been augmented and/or enhanced with new activities.
- All website links have been checked to ensure viability and any that have evaporated have been replaced, and many new links have been added.
- I've added many new books as recommended resources.
- New tables have been added and existing tables have been expanded.

Looking toward our 5th Edition for 2020, I'm hoping to expand the visual nature of our manual along with links to such things as YouTube videos to better appeal to a more technologically sophisticated cohort of junior members who could probably teach me a thing or two about my smart phone, which increasingly proves smarter than its Baby Boomer owner. If you have suggestions for enhancing visual appeal and/or links to video or other multimedia elements, I welcome hearing from you! Meanwhile, my sincere thanks to all who responded to my calls for ideas to add to our 4th Edition. I've incorporated every suggestion I've received. Most of all, I wish to thank local youth leaders who have embraced the program, devoted time and effort, and who found creative ways to implement it so that their juniors members have been encouraged not only to learn about our hobby and passion, but also to have fun!

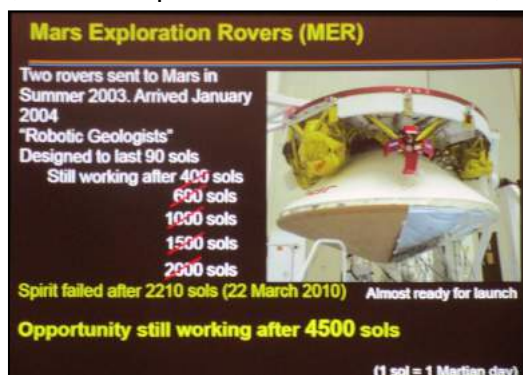




We were truly fortunate to have Dr. Eric Queen of NASA Langley as our speaker at the November GMSVP meeting. Dr. Queen provided a chronological overview of the exploration of Mars to date and some plans for future exploration. We learned about the landers, what has been collected and analyzed, and the conclusions drawn. There seems to be good data to support that water is still on the planet!



The top six science discoveries from NASA's Curiosity Rover included: a suitable home for life exist; Mars rocks have organic carbon; the atmosphere has active methane; radiation could pose health risks for humans; a thicker atmosphere and more water existed in Mars' past; and evidence of ancient streambeds exist.



William Holland School of Lapidary Arts 2017 Catalog

<http://www.lapidaryschool.org/>

As most of you know, if you have been a student here in the past 3 years or you are a current or former instructor, you will automatically be sent a print copy of our catalog when it becomes available after Thanksgiving.

If you have moved or will need to receive your catalog at a different address than you used previously, please let us know so that we can be sure your copy of the catalog will be sent to the proper address. We would hate for you to miss out on getting your copy.

If it has been longer than 3 years or you have not been a student here before, and you would like to receive a catalog, e-mail us your name and mailing address in the next 2 weeks and we will add you to the mailing list for the 2017 catalog.

Remember as well that updates to the schedule are made frequently and that the full season schedule, with all updates, will be available on our website about one week before catalogs *begin* mailing.

We hope that all of you are having a wonderful Fall and that we will be hearing from many of you when enrollment opens.





On Saturday October 29th, the Mountain Area Gem and Mineral Association (M.A.G.M.A.) hosted their semi-annual fossil dig at the Pipsico BSA Camp near Surry, VA. The collecting conditions (weather, temperature, etc.) were ideal, and there were many GMSVP club members participating (about a dozen by my count). The recent storm had exposed many areas of the river bank and bed, making it very easy to find the Miocene and Pliocene fossils.

The route to the beach put us about mid-point of the reservation's river frontage, and it wasn't bad going downhill. Although the hill made it pretty hard to haul our finds and treasures back to our vehicles, I don't think that it stopped most collectors. At the river, you could go north with downed trees and obstacles along the beach or south

with fewer obstacles. Both directions had great collecting.

Most people were finding clam shells and casts, scallop shells, oyster shells, bivalve tubes, shark's teeth, corals, whale/fish bones, and even a whale ear on the sand between the bank and river. People were very friendly and shared their findings and locations with others. If you weren't finding treasures, you must have been checking your eye lids for pin holes or looking for very specific items (whale ear and shark teeth). Of course, you had to learn what to look for and that takes time and experience. Some people just seemed to do better than others at finding specific fossils.

There were so many fossils that you became very selective and could bring home only the best, whole and undamaged. Please share them with your GMSVP club members and friends. Don't let them sit in a box at home. Display them, make an artistic piece using them (base of a gem tree, etc.) and spread the wealth for others to enjoy.



Club Logo Gear

Barbara Priest

Please contact Barbara Priest at ben7@cox.net, if you would like to order T-shirts and hats with the club logo. T-shirts are \$12.50 each up to size XL. Larger sizes are \$1.25 additional for each size greater than XL. Hats are \$13.50 each.



Seay Gold Mine, Buckingham County, VA

- Sunday December 11th at 9:00AM
- GPS Coordinates: 37.508861, -78.487862

Field Trip Contacts: Tom (757-373-0257) piffsniff@aol.com, and Sara Beth Phillips (757-788-9201) sphillips@ecslimited.com

Location/Directions: From Route 60 west of Richmond, follow it to the intersection of Rt.15 in Buckingham County and turn south on Route 15. Follow Route 15 south for 1.5 miles to the entrance on the right (gravel road and gated entrance). It is across the street from Restoration Outreach Church.

Please meet on-site at 9 AM. The site is gated and must be locked once we have entered the property. Cell phones are not guaranteed to work out there, so please be on time to enter the property. You may not be able to contact someone to let you in if you are late. Each time a person leaves, Tom (our field trip leader) will have to escort you out so he can unlock and lock the gate.

You can collect mineral samples until sunset. Minerals on-site include garnet, kyanite, gold fines and small nuggets, quartz, etc. Much of the garnet is cabbing grade and takes a nice polish.

This is primitive collecting. There are no bathrooms or other facilities on the property. Sturdy boots, safety glasses, and gloves are highly recommended, but not required. Please plan to wear appropriate clothes for the weather that day; it might be cold or even slightly rainy. Pack a lunch, snacks, and most importantly, water. Bring your own collecting bags, rock hammers, eye loops, etc. More importantly, have fun!!!

Please let me know if you will be attending by Saturday December 10th. It will be nice to get a head count so we know how many people to expect.

Gem Tree Workshop

Gary Bergtholdt is holding 2-3 hour gem tree workshops at his home. If interested, contact Gary at: gbergtholdt@gmail.com.



2017 TOTE Shows

- March 24—26, Hampton, VA
- April 21—23, July 14—16, & October 6—8, VA Beach



**GMSVP Regular Meeting
Thursday, December 1st, 7 PM**

**Holiday Party
Pollyanna Gift Exchange**

**Sandy Bottom Nature Park's Nature Center,
Hampton, VA (Enter from Big Bethel Road)**

Please see the minutes on pages 13 and 14 for GMSVP committee reports.



- The meeting was brought to order at 7:10 PM by President Sara Phillips at Sandy Bottom Nature Center.
- Sara welcomed new members and guests.
- Sara informed us that, starting November 1st and for the next 2 years, she will be serving as the Region IV Vice President of Eastern Federation of Mineralogical and Lapidary Societies (EFMLS). Therefore, she would like someone else to take over as field trip coordinator. She also described her trip to the EFMLS conference in Rochester, NY.
- Sara expressed our congratulations to Holly Worsham, who placed first in both the AFMS and EFMLS website competitions, and Michael Griffith, who placed 5th in the AFMS national and 3rd in the EFMLS bulletin contest in the non-technical article category of the competition. Other EFMLS bulletin contest winners for GMSVP included: Robert Mazzrillo 4th place for written feature, Dan Fontaine 4th place for large bulletin, Seth Hempley 5th place for junior article, Sara Phillips honorable mention for technical article, and Gary Bergtholdt and Barbara and Walter Priest honorable mention in the non-technical article category.
- We will elect and install officers at the December meeting. The annual holiday feast will take the place of the regular meeting. All current officers are willing to continue serving in their current offices, except for Pat Fontaine, who will serve as either Secretary or Hospitality Chair, but not in both positions. Any member may run for any office.
- In addition, several committee chair positions are open: hospitality, field trip, pebble pups, TOTE shows, property, and library/historian. These are great opportunities to become active in the club.
- First Vice President Brenda Hawks reminded members to renew their club memberships by the end of December. The cost is the same as last year: \$15 for an individual, \$20 for a couple, and \$25 for a family residing in the same household.
- Second Vice President Michael Griffith reported that we have 616 Facebook followers. The December meeting is the annual holiday feast.
- Secretary/ Hospitality Chair Pat Fontaine thanked everyone who contributed to the refreshments for tonight's meeting. She described the duties of the Secretary and the Hospitality Chair, so that members considering these positions can make informed decisions. Pat also asked for a volunteer to assist with cooking the turkey or ham for the December meeting.
- Treasurer Gary Bergtholdt reported that the club is in good shape financially. The recent TOTE show was our most successful show in 4 or 5 years.
 - ◆ Gary also reminded us that the Richmond club rock swap will take place November 12, and the George Mason show will be on November 19-20. Complete information on these events can be accessed under the "events" tab on our website and in the October newsletter.
 - ◆ Gary also suggested that interested members are welcome to participate in the Pollyanna gift exchange at the December meeting.

(Cont'd on next page.)



- Field Trip Coordinator Sara Phillips stated that the next field trip will take place on Sunday December 11 at the Seay Gold Mine in Buckingham County, beginning at 9 AM. More details will be forthcoming.
- The Pebble Pup co-chair position is still vacant.
- The TOTE show chair position is now vacant.
- Newsletter editor Dan Fontaine thanked those who have submitted articles for publication in the newsletter. He would like members to submit articles and pictures covering the recent field trip to Pipsico.
- The Property Manager position is vacant.
- The Librarian/Historian position is vacant.
- Faceting Chair Chuck Rodgers had nothing new to report.
- The Silver Fabrication Chair Anthony Hubbard was not present.
- Minerology Chair Walter Priest had nothing new to report.
- Webmaster Holly Worsham reported that the new geode brochures were well received by people who purchased geodes at the TOTE show.
- The business meeting was adjourned at 7:40 PM so that we could enjoy our speaker Eric Queen from NASA who presented a very informative talk on the exploration of Mars and what we have learned about its geology.

Visit a Show

Source: EFMLS Newsletter, Volume 64, Number 1, November 2016

March:

4 – 5: 54th Annual Earth Science Gem & Mineral Show sponsored by the Delaware Mineralogical Society. NEW LOCATION: University of Delaware, Wilmington Campus, 2800 Penn Ave (Rt. 52), Wilmington, DE. Contact: Gene Hartstein at gene@fossilnut.com.

11: 41st Annual Micromount Symposium sponsored by the Leidy Micromount Society. Northminster Presbyterian Church, 140 Trenton Rd; Fairless Hills, PA. Contact: Don McAlarnen, don.mcalarnen@hpe.com or 610-584-1364.

18-19: 53rd Annual GLMS/MC Gem, Mineral and Fossil Show sponsored by the Gem, Lapidary & Mineral Society of Montgomery Co. MD. Montgomery Co. Fairgrounds, 16 Chestnut St; Gaithersburg, MD. Contact: Doug Baum at dbaum18@aol.com, 240-888-7485 or glmsmc.com.

24-26: Annual Catawba Valley Gem & Mineral Show sponsored by the Catawba Valley Gem & Mineral Club. Hickory Metro Convention Center, 1960 13th Ave Dr SE; Hickory, NC 28602. Info: Dean Russell 828-303-1448 or cvgmcsecretary@aol.com.

25-26: CVMC 2017 Show sponsored by the Connecticut Valley Mineral Club. Hadley Farms Meeting House, Rt. 9, 41 Russell St; Hadley, MA. Contact: Lee Champigny, 413-320-9741 or pullg4fun@gmail.com, or westernmassmineralshow.com.

AFMS CODE OF ETHICS



I will respect both private and public property and will do no collecting on privately owned land without the owner's permission.

I will keep informed on all laws, regulations of rules governing collecting on public lands and will observe them.

I will to the best of my ability, ascertain the boundary lines of property on which I plan to collect.

I will use no firearms or blasting material in collecting areas.

I will cause no willful damage to property of any kind - fences, signs, buildings.

I will leave all gates as found.

I will build fires in designated or safe places only and will be certain they are completely extinguished before leaving the area.

I will discard no burning material - matches, cigarettes, etc.

I will fill all excavation holes which may be dangerous to livestock.

I will not contaminate wells, creeks or other water supply.

I will cause no willful damage to collecting material and will take home only what I can reasonably use.

I will practice conservation and undertake to utilize fully and well the materials I have collected and will recycle my surplus for the pleasure and benefit of others.

I will support the rockhound project H.E.L.P. (Help Eliminate Litter Please) and will leave all collecting areas devoid of litter, regardless of how found.

I will cooperate with field trip leaders and those in designated authority in all collecting areas.

I will report to my club or Federation officers, Bureau of Land management or other authorities, any deposit of petrified wood or other materials on public lands which should be protected for the enjoyment of future generations for public educational and scientific purposes.

I will appreciate and protect our heritage of natural resources.

I will observe the "Golden Rule", will use "Good Outdoor Manners" and will at all times conduct myself in a manner which will add to the stature and Public "image" of rockhounds everywhere.